




ALARM RADIO MONITORING LTD

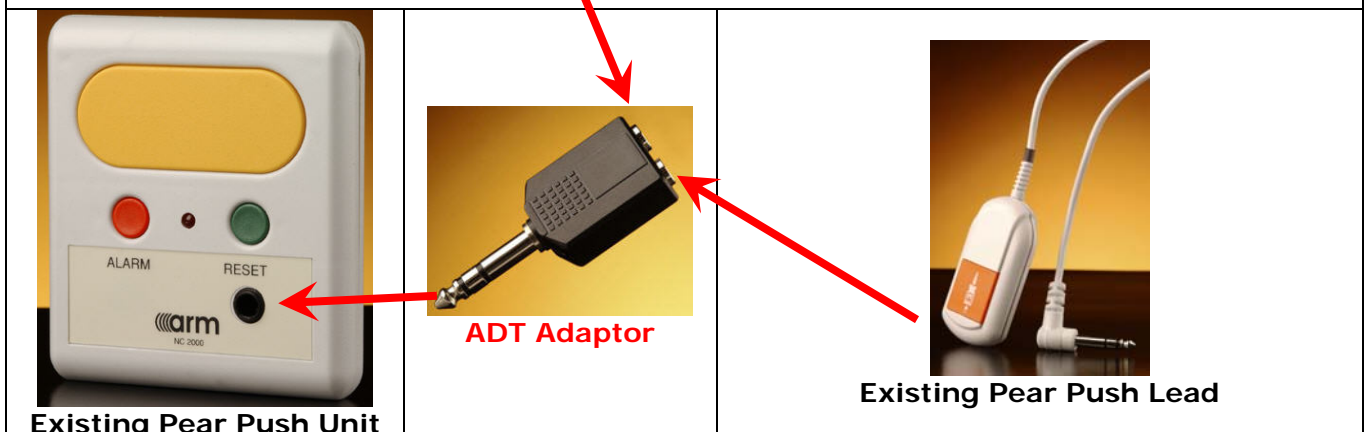
PIR (Movement) Sensor

The EC-PIR-KIT is designed to be integrated to an existing ARM Nurse Call 2000 system as an upgrade, to raise an alarm by picking up the user when they get out of bed. In doing so they trigger the sensor which activates the Pear Push unit on the wall and the system notifies staff that the user is up and around. By using the included adaptor the user is still able to utilise the existing pear push lead should they need to.

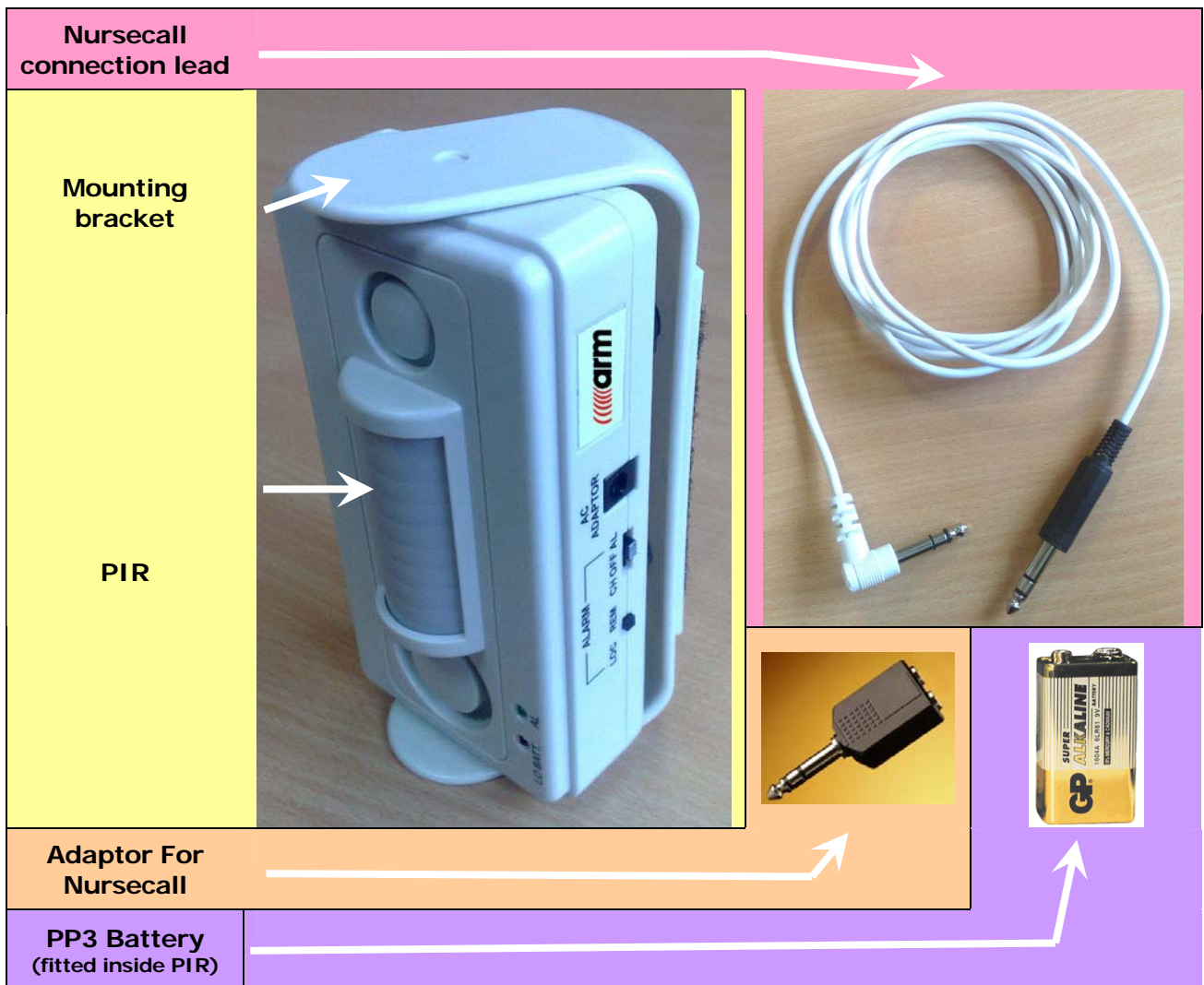
This type of system is ideal for users who may be frail and tend to fall without assistance or who have a tendency to get up and walk around during the night, as the sensor will see them and indicate this to the staff.

The PIR movement sensor is intended to be mounted on the leg of the bed and comes complete with three metres of cable for ease of connection to the existing Nurse Call point. It is powered by the included 9V battery or an optional DC power adaptor.

PIR Sensor	EC-PIR-KIT	
	Battery (Supplied)	9V PP3 Also known as – 6LR61 or 1604A
	Sensor Lead	3m
	Dimensions	149 x 81 x 40mm (H x W x D)
	Power Supply (Optional)	Plug in 9V DC supply



First unpack the parts. You will have:



MAKING THE CONNECTION TO YOUR NURSE CALL SYSTEM

- Insert the white jack plug connector into the back of the PIR Sensor
- Insert the black jack plug connector into the adaptor
- Remove the existing pear push lead from the Nursecall unit and plug it into the other side of the adaptor
- Plug the adaptor into the Nursecall unit
- Reset the Nursecall unit by pressing the button marked "Reset"

Once the connection to the Nursecall unit is complete you can proceed to the next step and set up the PIR.

Setting up the PIR

Ensure the LOCAL/REMOTE switch is set to **REM**

This will make the unit trigger the Nursecall unit.

(If set to LOC it will activate it's local built in siren, not the Nursecall unit)



To turn the PIR on, move the CHIME/OFF/ALARM switch to **AL**

- The green light on the front will flash rapidly for about 20 seconds to indicate the PIR is now setting.
- Keep clear of the PIR and ensure nothing is moving in front of where it is aimed during this period.
- Once set, the green light will flash briefly once every 5 seconds to indicate it is armed and ready.



Once motion has been detected, the PIR will trigger the Nursecall unit and then stay in alarm.

To reset the system –

- Turn the PIR CHIME/OFF/ALARM switch to **OFF**
- Press the RESET button on the Nursecall unit
- To re-arm the PIR, go back to the previous stage above

ENSURE THAT YOU HAVE TESTED THE OPERATION OF THE PIR WITH THE NURSECALL UNIT. ONCE TESTED, CHECK THAT THE GREEN LIGHT IS FLASHING ONCE EVERY 5 SECONDS BEFORE LEAVING THE SERVICE USER UNATTENDED.